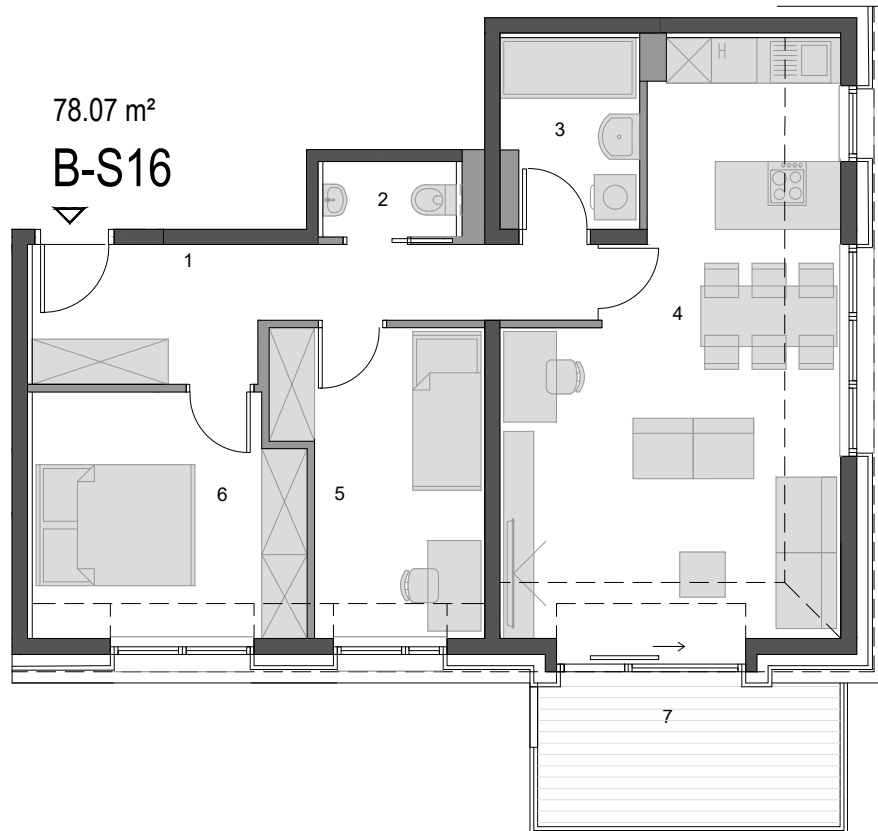


# VILI TABOR

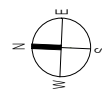
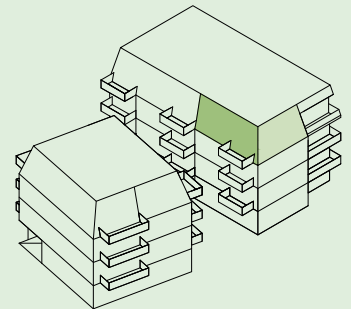
## B-S16



B-S16		m <sup>2</sup>	SKUPAJ
1	predsoba	9.97	
2	wc	1.76	
3	kopalnica	4.47	
4	dnevna soba / kuhinja	31.91 *	
5	soba	10.69 *	
6	spalnica	12.27 *	71.07* m <sup>2</sup>
7	balkon	8.00	
	skupaj stanovanje		78.07* m <sup>2</sup>

K 6	shramba	3.38
P1	parkirno mesto	12.50

\* del površine je pod poševno streho  
preostala višina pa je min 3,4 m



0 1m

