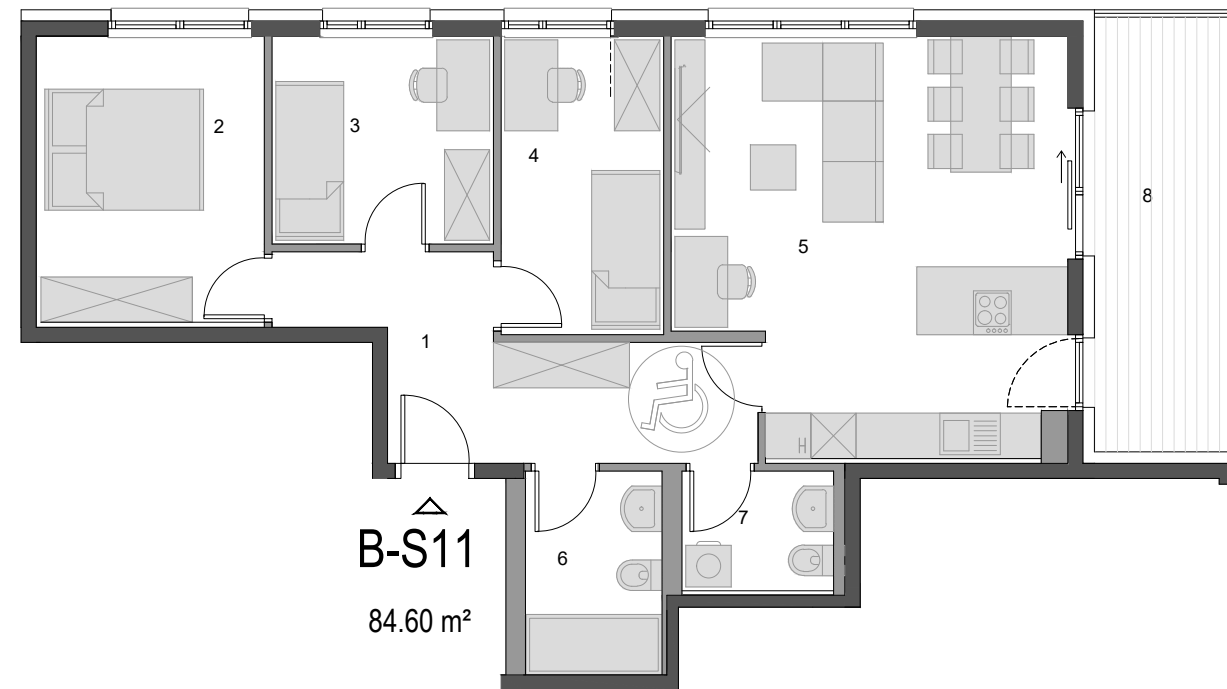


# VILI TABOR

## B-S11



B-S11  
84.60 m<sup>2</sup>

B-S11		m <sup>2</sup>	SKUPAJ
1	predsoba	11.05	
2	spalnica	11.18	
3	soba 1	8.06	
4	soba 2	8.49	
5	dnevna soba/kuhinja	27.22	
6	kopalnica	4.87	
7	kopalnica	3.18	74.05 m <sup>2</sup>
8	balkon	10.55	
	skupaj stanovanje		84.60 m <sup>2</sup>

K 16	shramba	3.82
P1	parkirno mesto	12.50

