

AP7

STANOVANJSKA POVRŠINA

64,7m²

TERASA

24,6m²

SHRAMBA

7,3m²

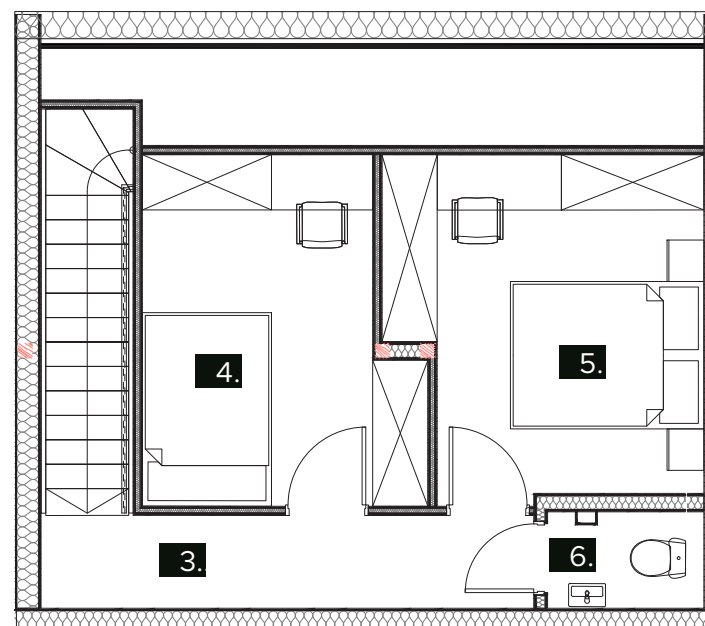
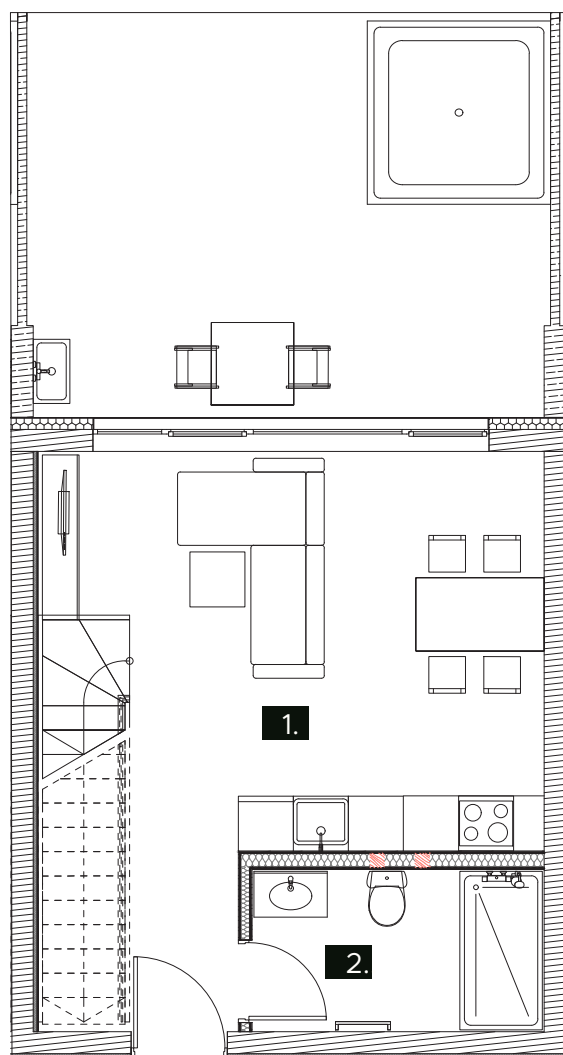
1.	Dnevni prostor	29,8m ²
2.	Kopalnica	5,64m ²
3.	Hodnik	5,34m ²
4.	Spalnica 1	10,51m ²
5.	Spalnica 2	12,02m ²
6.	Wc	1,56m ²

Skupaj 64,7m²

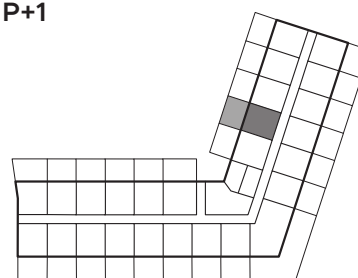
Terasa 24,6m²

Shramba 7,3m²

Skupaj 96,6m²



P+1



P+2

