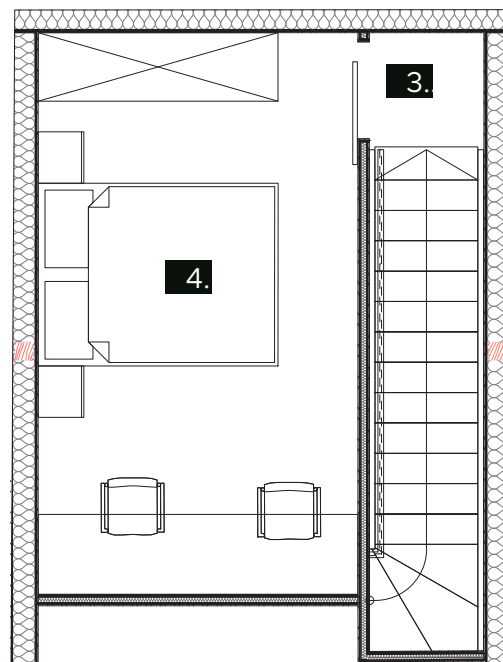
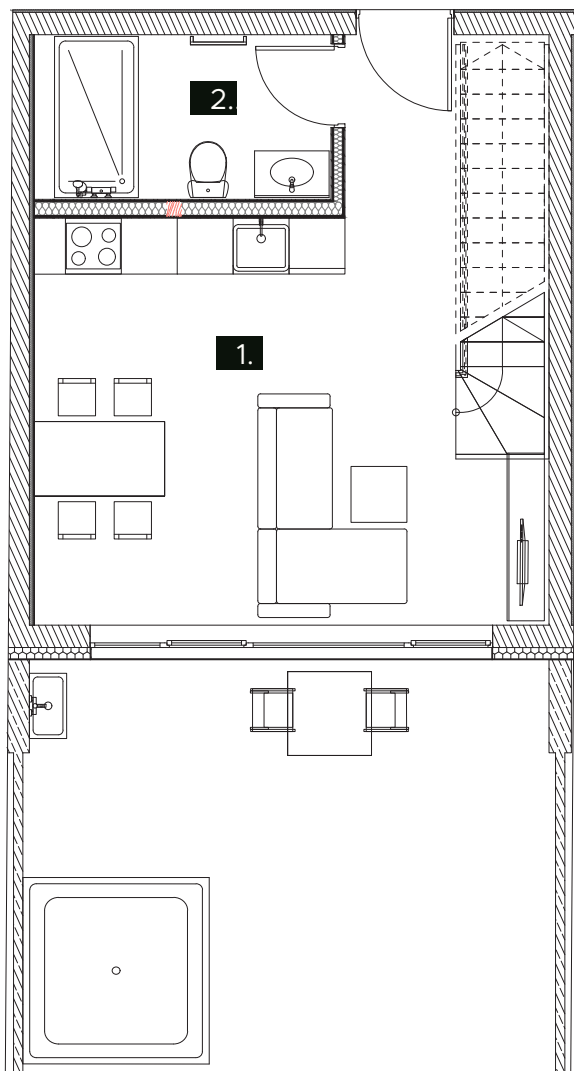


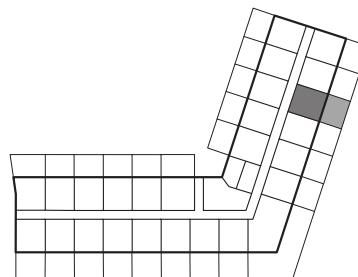
STANOVANJSKA POVRŠINA
48,9m²
 TERASA
24,7m²
 SHRAMBA
7,3m²

AP6

1.	Dnevni prostor	29,8m ²
2.	Kopalnica	5,29m ²
3.	Hodnik	1m ²
4.	Spalnica 1	13,76m ²
5.	Spalnica 2	/
6.	Wc	/
Skupaj		48,9m ²
Terasa		24,7m ²
Shramba		7,3m ²
Skupaj		56,2m²



P+1



P+2

