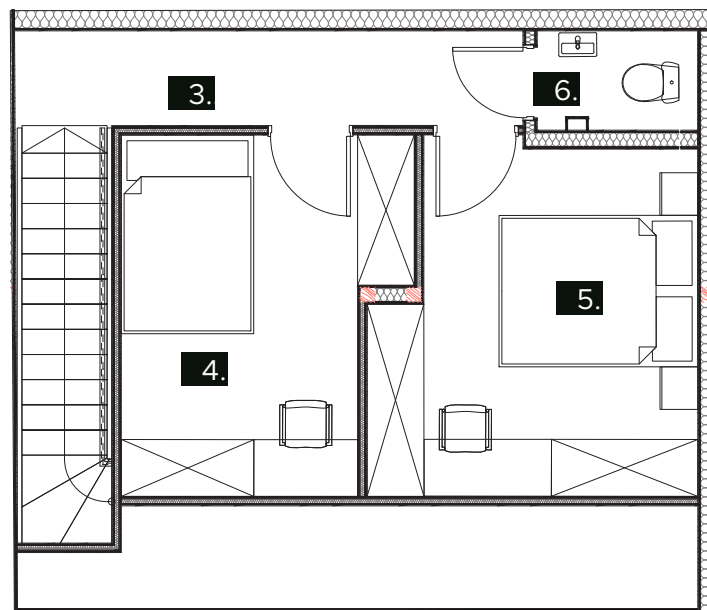
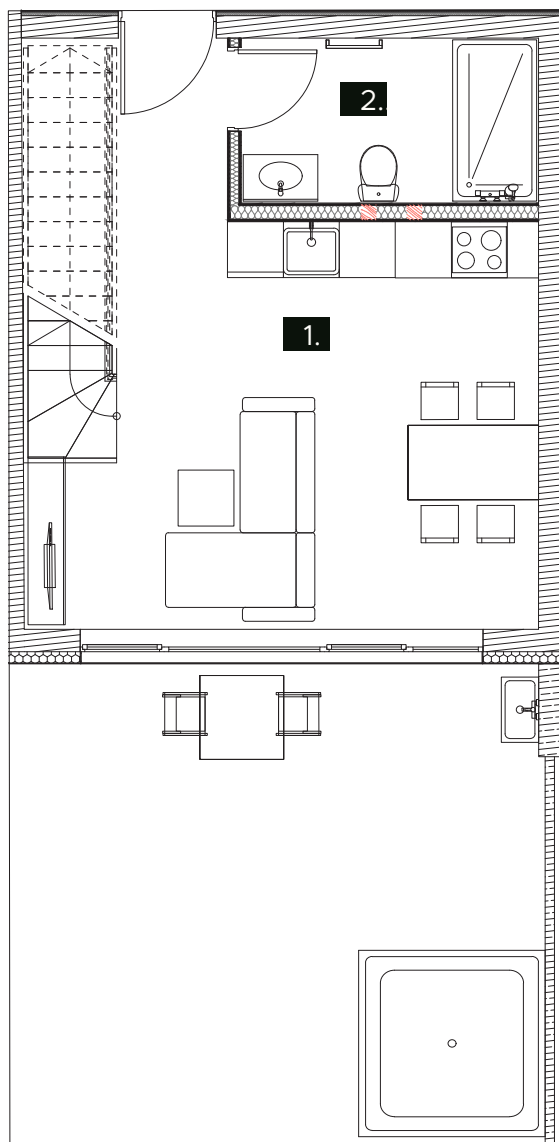


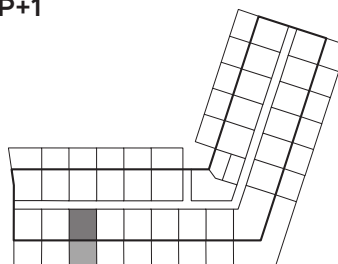
STANOVANJSKA POVRŠINA
64,6m²
 TERASA
28,9m²
 SHRAMBA
6,6m²

AP22

1. Dnevni prostor	29,8m ²
2. Kopalnica	5,64m ²
3. Hodnik	5,34m ²
4. Spalnica 1	10,49m ²
5. Spalnica 2	12m ²
6. Wc	1,56m ²
<hr/>	
Skupaj	64,6m ²
<hr/>	
Terasa	28,9m ²
Shramba	6,6m ²
<hr/>	
Skupaj	100,01m²



P+1



P+2

