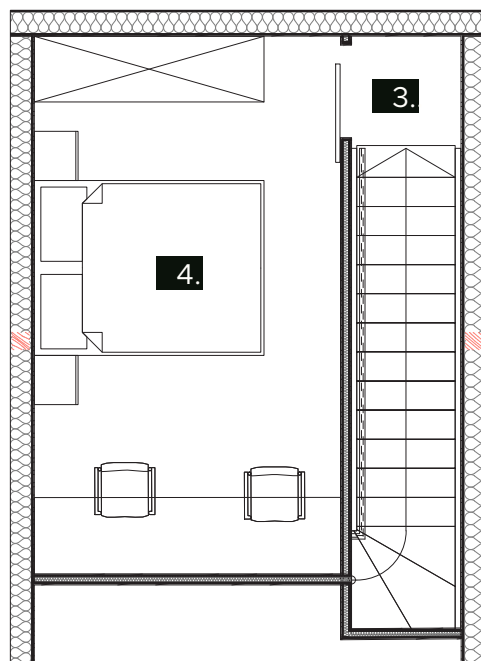
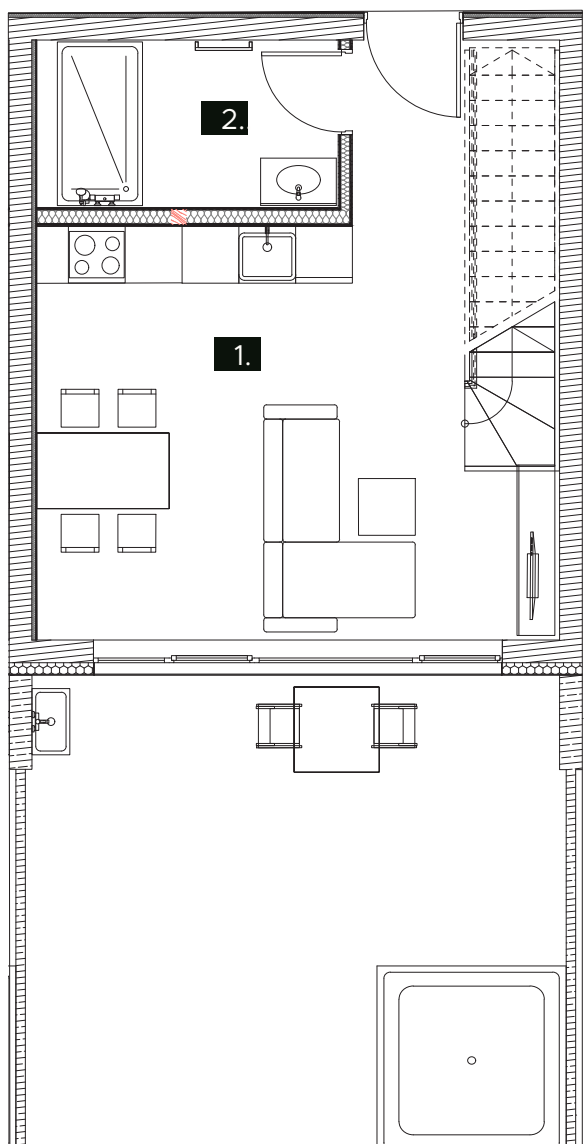


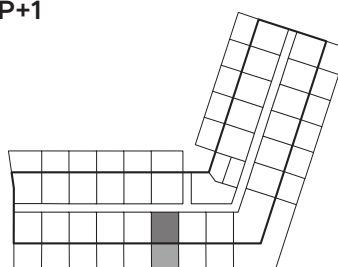
STANOVANJSKA POVRŠINA
49,9m²
 TERASA
28,9m²
 SHRAMBA
5,6m²

AP16

1. Dnevni prostor	29,8m ²
2. Kopalnica	5,29m ²
3. Hodnik	1m ²
4. Spalnica 1	13,76m ²
<hr/>	
Skupaj	49,9m ²
<hr/>	
Terasa	28,9m ²
Shramba	5,6m ²
<hr/>	
Skupaj	84,4m²



P+1



P+2

