

AP1

STANOVANJSKA POVRŠINA

49,9m²

TERASA

25,5m²

SHRAMBA

6,4m²

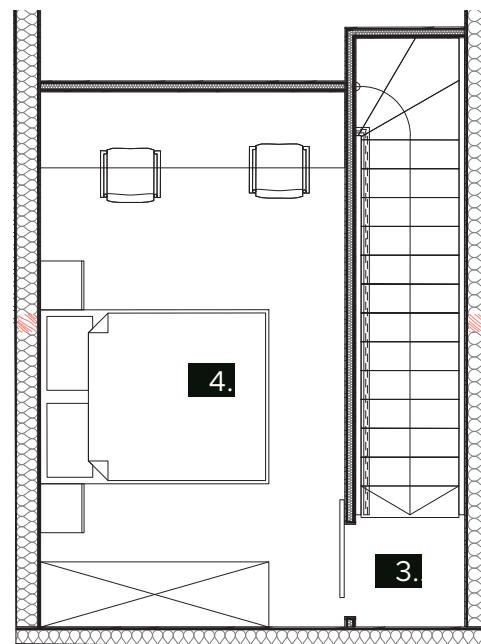
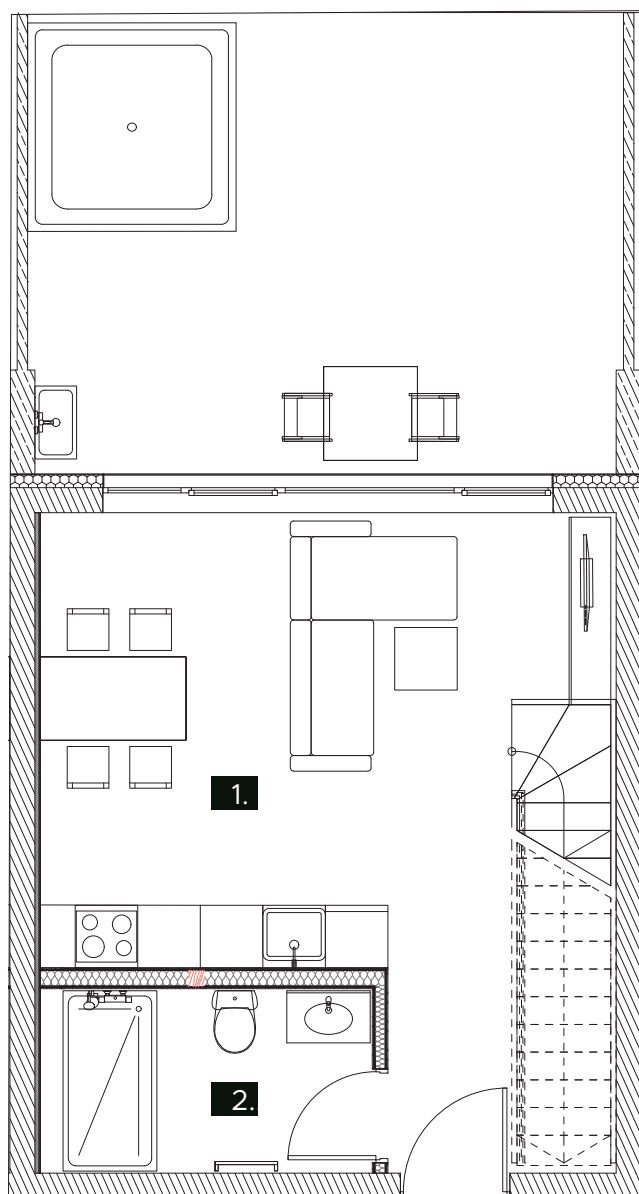
1.	Dnevni prostor	29,8m ²
2.	Kopalnica	5,29m ²
3.	Hodnik	1m ²
4.	Spalnica 1	13,78m ²

Skupaj 49,9m²

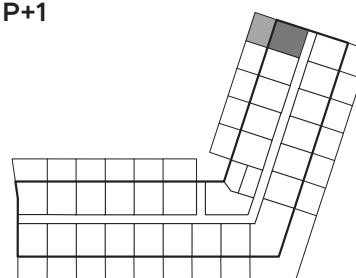
Terasa 25,5m²

Shramba 6,4m²

Skupaj 81,8m²



P+1



P+2

