

# AP 11

STANOVANJSKA POVRŠINA

**89,3m<sup>2</sup>**

TERASA

**24,7m<sup>2</sup>**

SHRAMBA

**5,6m<sup>2</sup>**

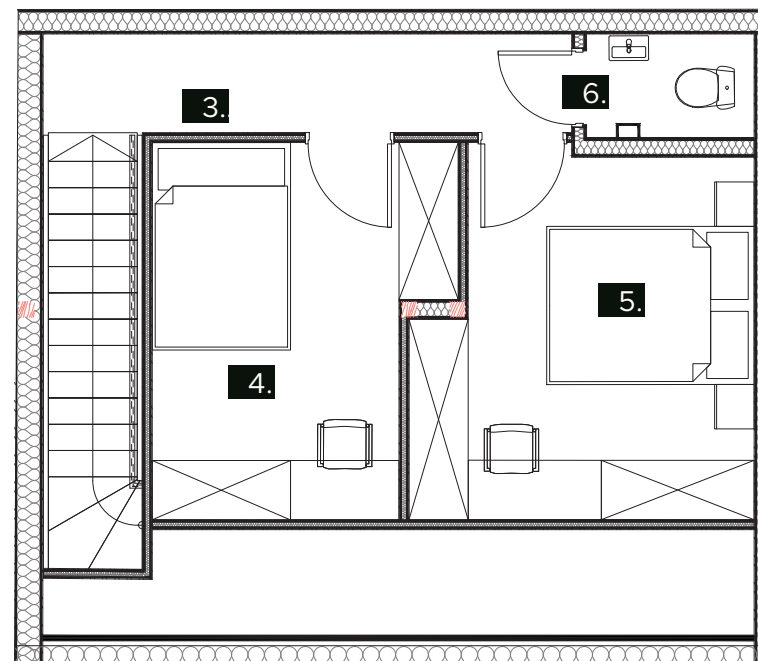
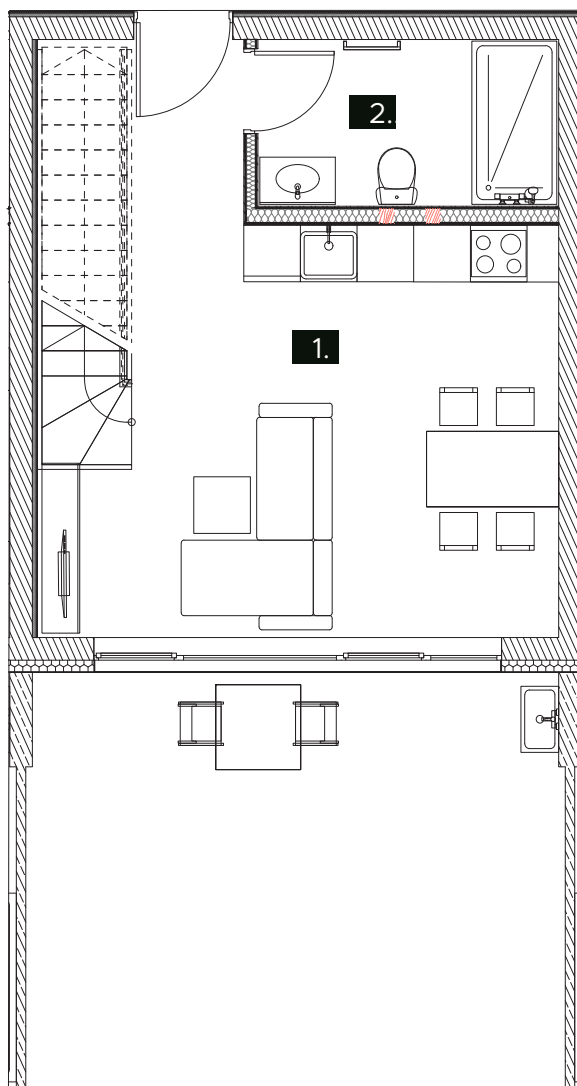
|    |                |                     |
|----|----------------|---------------------|
| 1. | Dnevni prostor | 29,8m <sup>2</sup>  |
| 2. | Kopalnica      | 5,64m <sup>2</sup>  |
| 3. | Hodnik         | 5,34m <sup>2</sup>  |
| 4. | Spalnica 1     | 10,49m <sup>2</sup> |
| 5. | Spalnica 2     | 12m <sup>2</sup>    |
| 6. | Wc             | 1,56m <sup>2</sup>  |

Skupaj 89,3m<sup>2</sup>

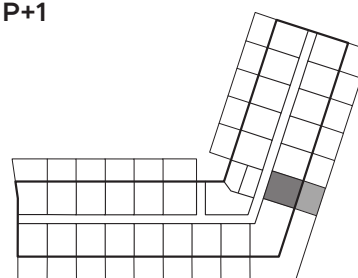
Terasa 24,7m<sup>2</sup>

Shramba 5,6m<sup>2</sup>

Skupaj 94,9m<sup>2</sup>



P+1



P+2

