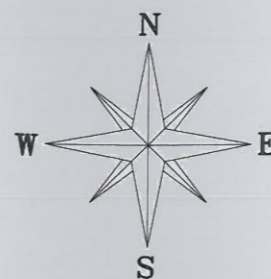
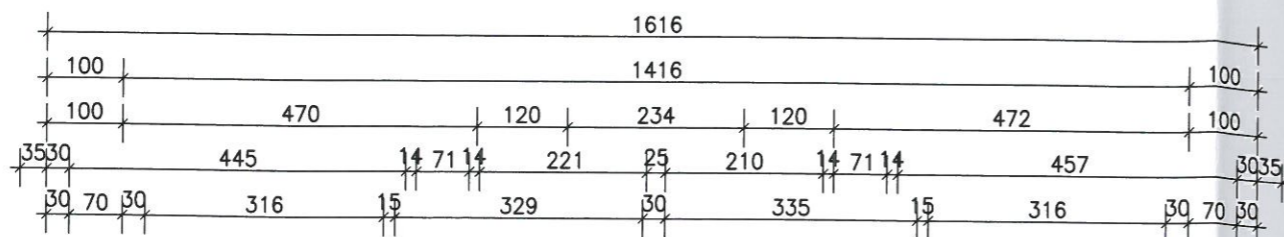


TLOCRT II. KATA MJ.1:100



II. KAT

Z	NAZIV PROSTORIJE	NETTO	KOEFIC.	OBR.NETTO
1	hodnik	6.91 m ²	1.00	6.91 m ²
2	stepenište	6.45 m ²	1.00	6.45 m ²
3	wc	1.22 m ²	1.00	1.22 m ²
4	hodnik	5.36 m ²	1.00	5.36 m ²
		19.94 m ²		19.94 m ²

S9	NAZIV PROSTORIJE	NETTO	KOEFIC.	OBR.NETTO
5	kuhinja i blagovaona	13.72 m ²	1.00	13.72 m ²
6	kupaonica	2.65 m ²	1.00	2.65 m ²
7	s.soba	8.90 m ²	1.00	8.90 m ²
8	terasa	5.29 m ²	0.50	2.65 m ²
		30.56 m ²		27.92 m ²

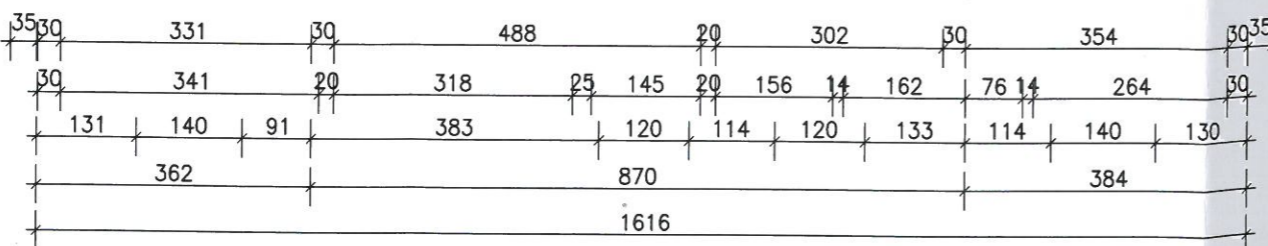
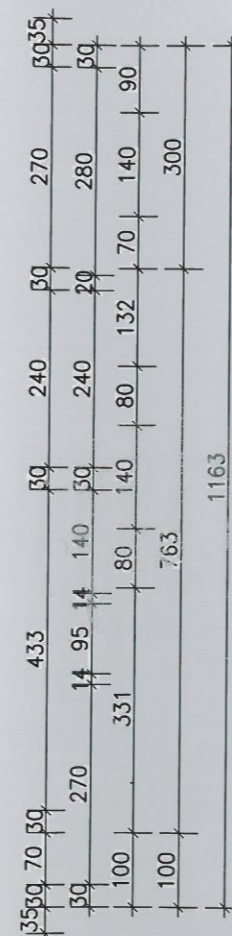
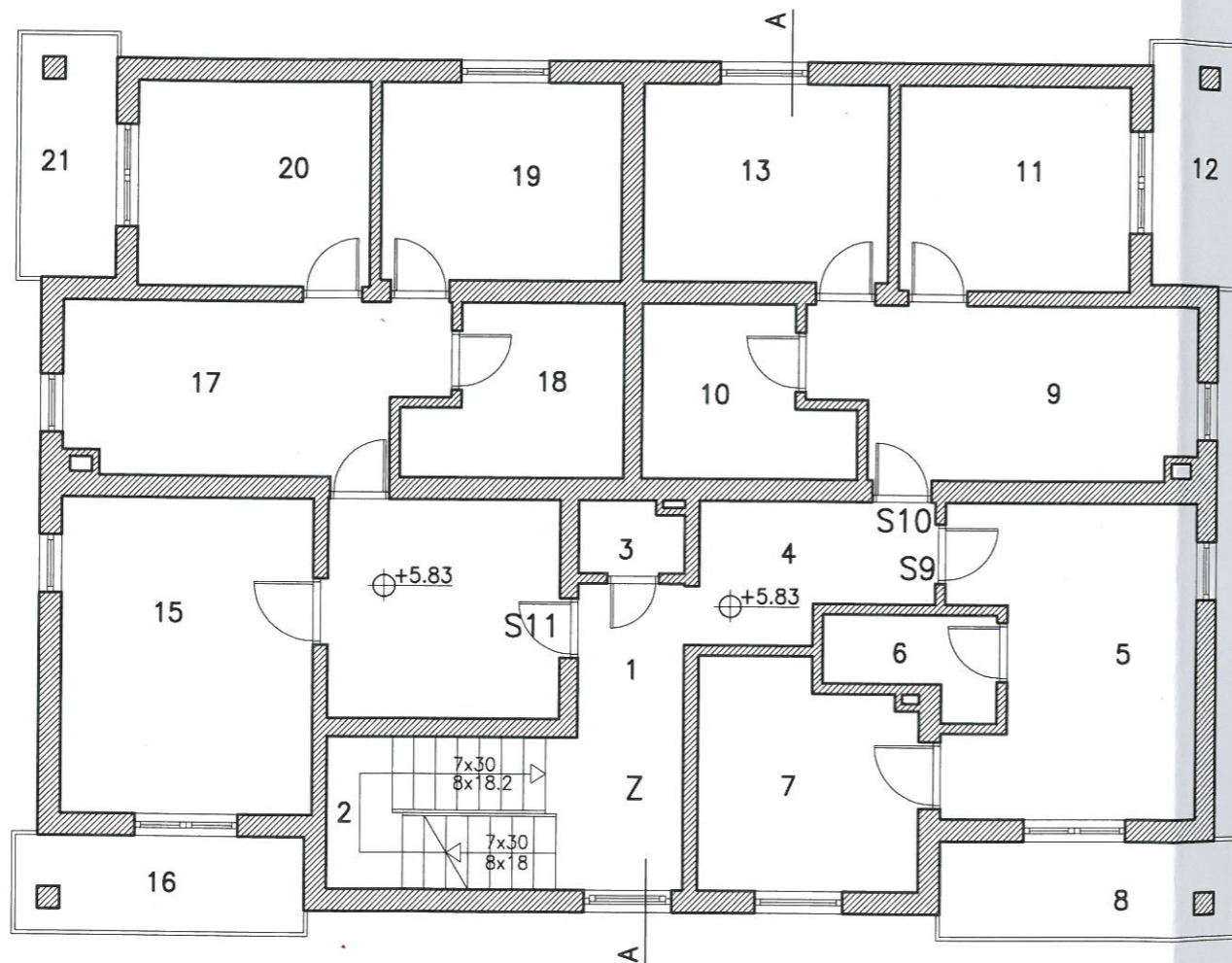
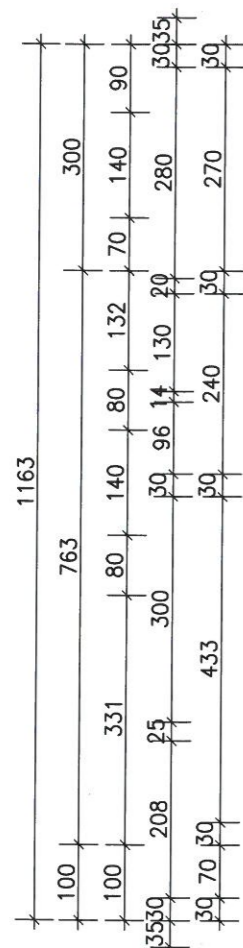
S10	NAZIV PROSTORIJE	NETTO	KOEFIC.	OBR.NETTO
9	kuhinja i blagovaona	11.87 m ²	1.00	11.87 m ²
10	kupaonica	5.85 m ²	1.00	5.85 m ²
11	s.soba	8.85 m ²	1.00	8.85 m ²
12	terasa	4.20 m ²	0.50	2.10 m ²
13	s.soba	9.04 m ²	1.00	9.04 m ²
		39.81 m ²		37.71 m ²

S11	NAZIV PROSTORIJE	NETTO	KOEFIC.	OBR.NETTO
14	hodnik	9.54 m ²	1.00	9.54 m ²
15	s.soba	14.77 m ²	1.00	14.77 m ²
16	terasa	4.99 m ²	0.50	2.50 m ²
17	kuhinja i blagovaona	11.58 m ²	1.00	11.58 m ²
18	kupaonica	6.12 m ²	1.00	6.12 m ²
19	s.soba	8.88 m ²	1.00	8.88 m ²
20	s.soba	8.85 m ²	1.00	8.85 m ²
21	terasa	4.20 m ²	0.50	2.10 m ²
		68.93 m ²		64.34 m ²

II KAT UKUPNO:

NETO: 159.24 m²

NETO KORISNO: 149.91 m²



PODNOŠITELJ	MARJANOVIĆ ANTE		
ZAHTJEVA :	Đuba br. 22G , Umag		
GRAĐEVINA :	VIŠESTAMBENA ZGRADA S+P+2+Pk		
LOKACIJA :	Umag , Naselje Đuba k.č.br. 3793/11 k.o. Umag		
FAZA PROJEKTA :	SNIMKA IZVEDENOG STANJA		
VRSTA PROJEKTA :	ARHITEKTONSKA SNIMKA		
NACRT :	IZVEDENO STANJE TLOCRT II. KATA		
IZRADILA :	LJILJANA PERŠIĆ , dipl.ing.arh. <i>Peršić</i>		
SURADNIK :	UNA MUFTIĆ , mag.ing.aedif. <i>Muftić</i>		
DIREKTOR :	ZLATKO MUFTIĆ , dipl.ing.grad. <i>Muftić</i>		
BROJ :	DATUM :	MJERILO :	NACRT br.:
L-35/13-A	prosinac 2013	1:100	5

IZVEDENO STANJE

HRVATSKA KOMORA INŽENJERA GRAĐEVINARSTVA
Zlatko Muftić
dipl. ing. građ.
Ovlašteni inženjer građevinarstva
G 1460

LJILJANA PERŠIĆ
dipl.ing.arh.
OVLAŠTENI ARHITEKTA
A 3109